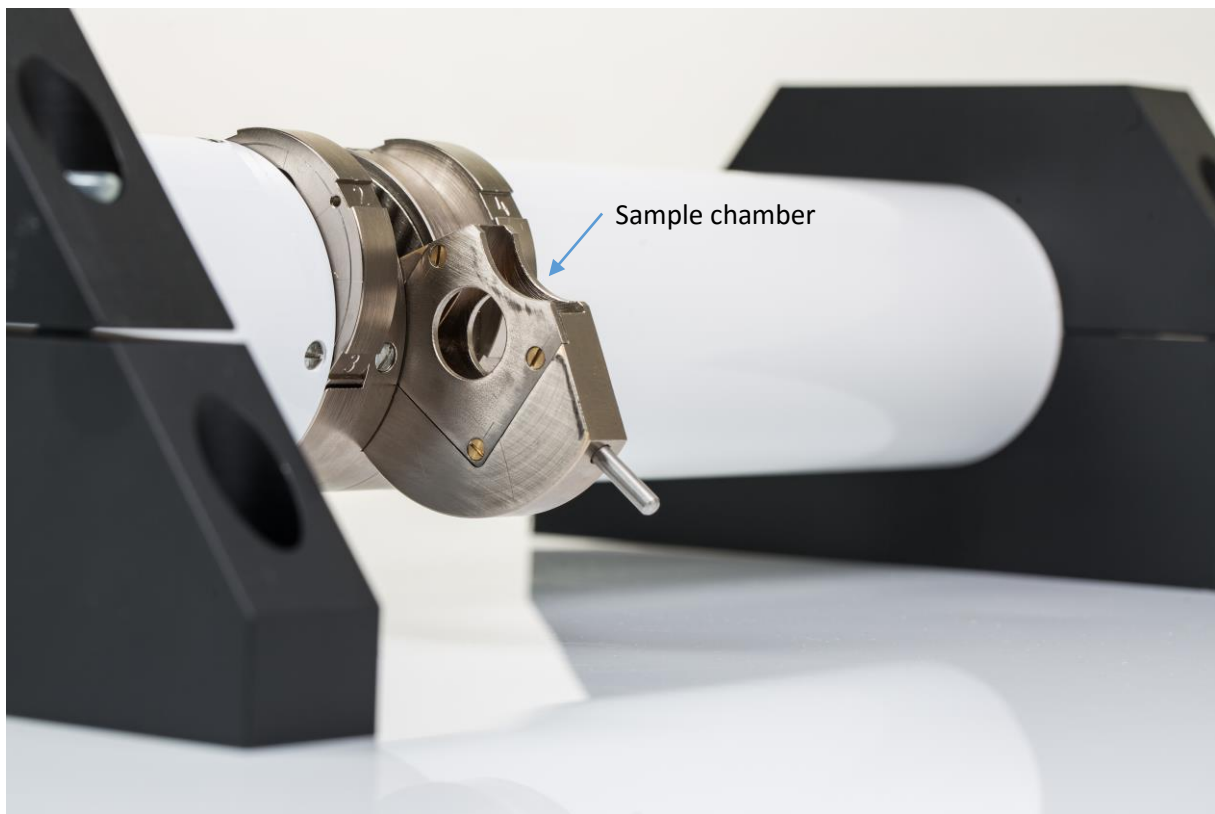


MS96 – the 3rd generation

## SAMPLES

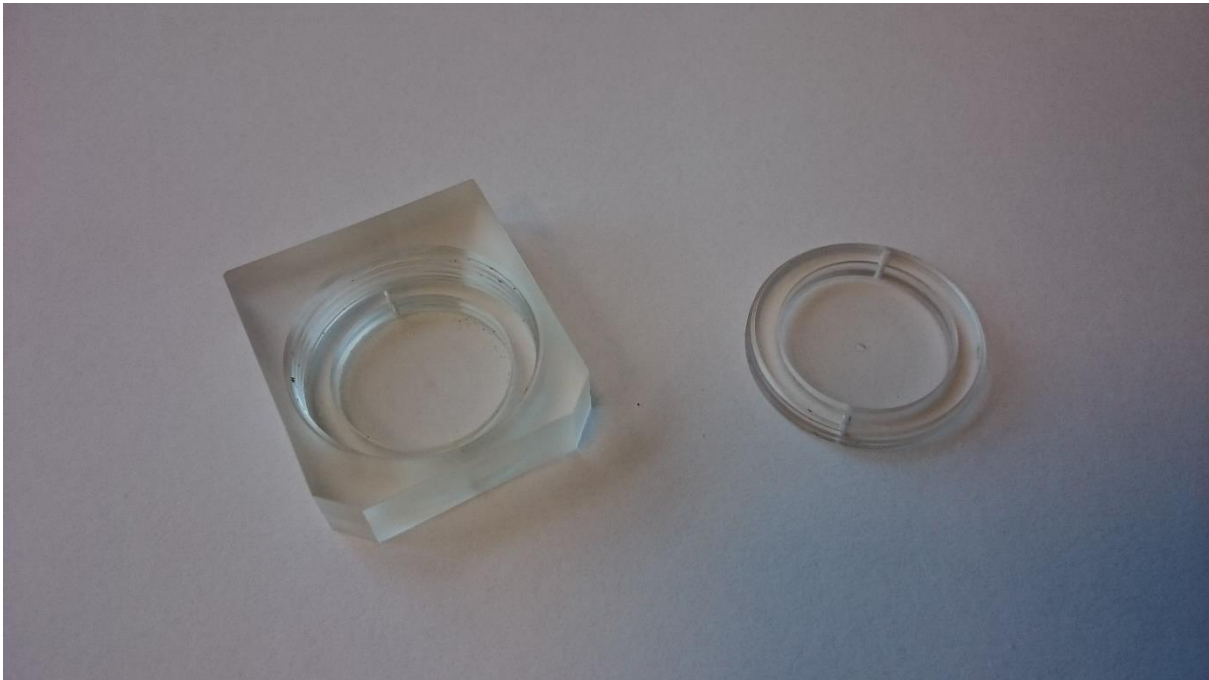
The samples must be inserted into the sample chamber (see fig. bellow).



**In general**, you can use any type of sample container you want. There are these rules (example for Mössbauer spectroscopy on Iron):

- 1) Sample container must be transparent for 14.4 keV gamma photons.
- 2) Sample chamber can NOT contain any Iron.

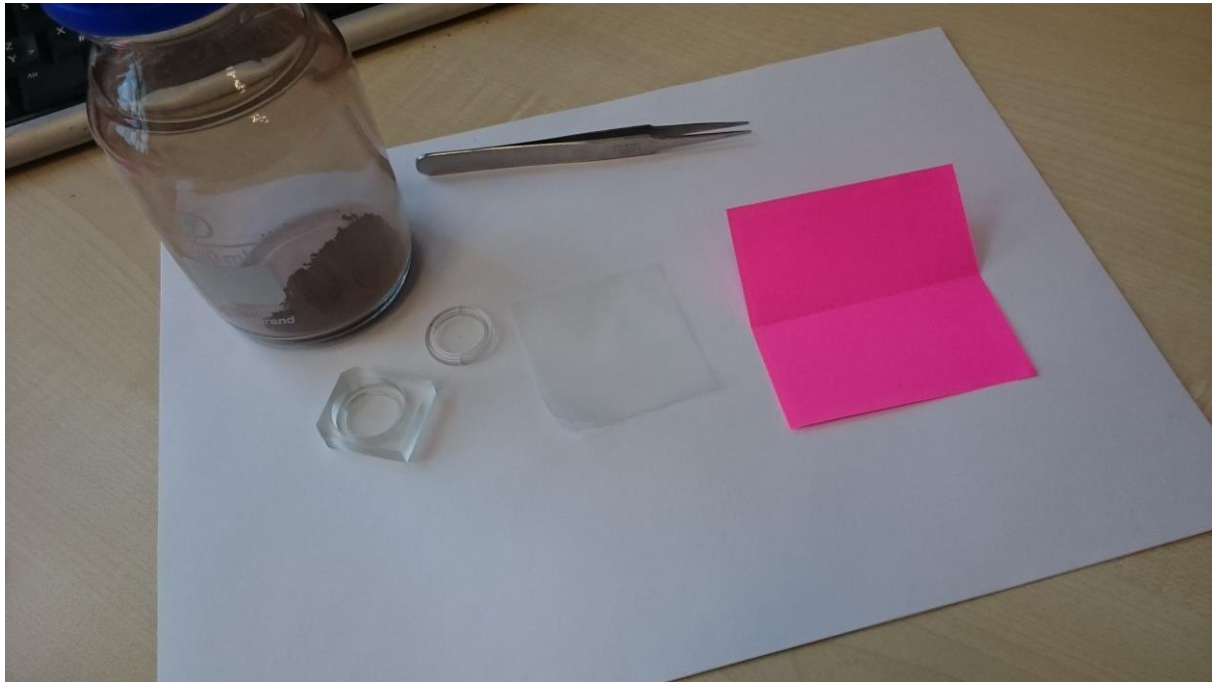
For easy use, we provide sample containers made from plastic (see fig. below). The sample should be inserted inside.



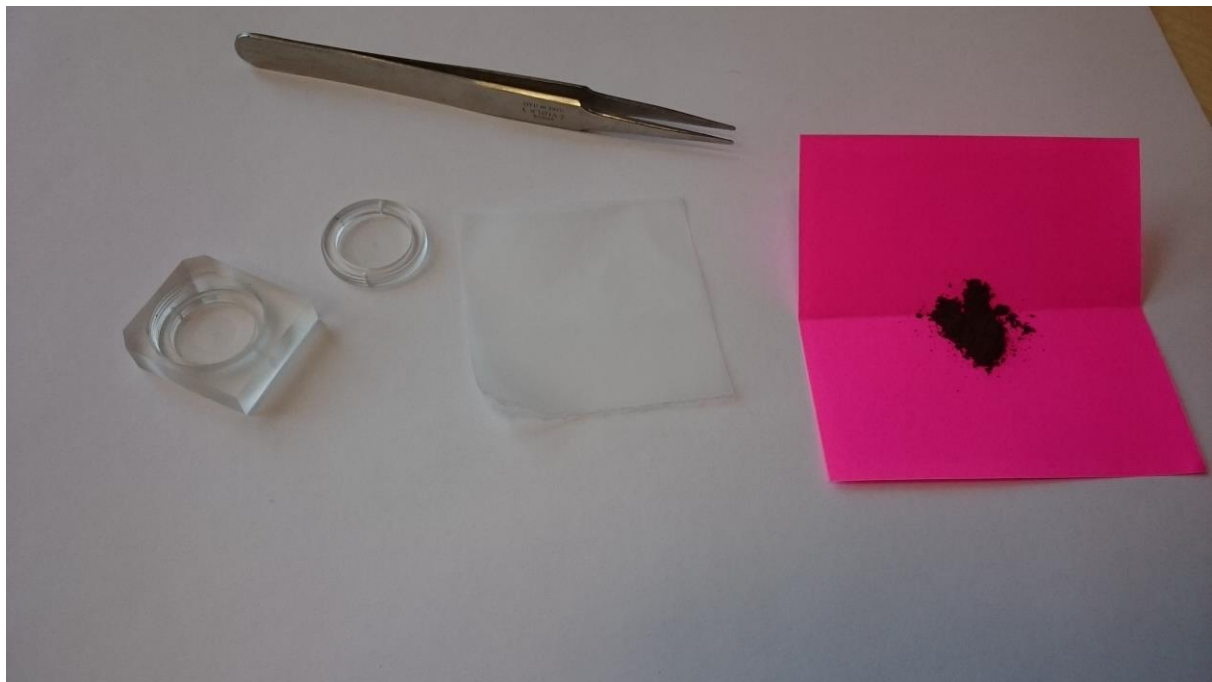
If you are using powder samples, it is smart to wrap them into a thin foil. We are usually using **PARAFILM** foil (it is possible to use even ordinary paper).



You will need a piece of PARAFILM foil, folded paper and some stick (for example a little pincette).



Put your sample on folded paper (ideal amount is from 10 mg to 50 mg).



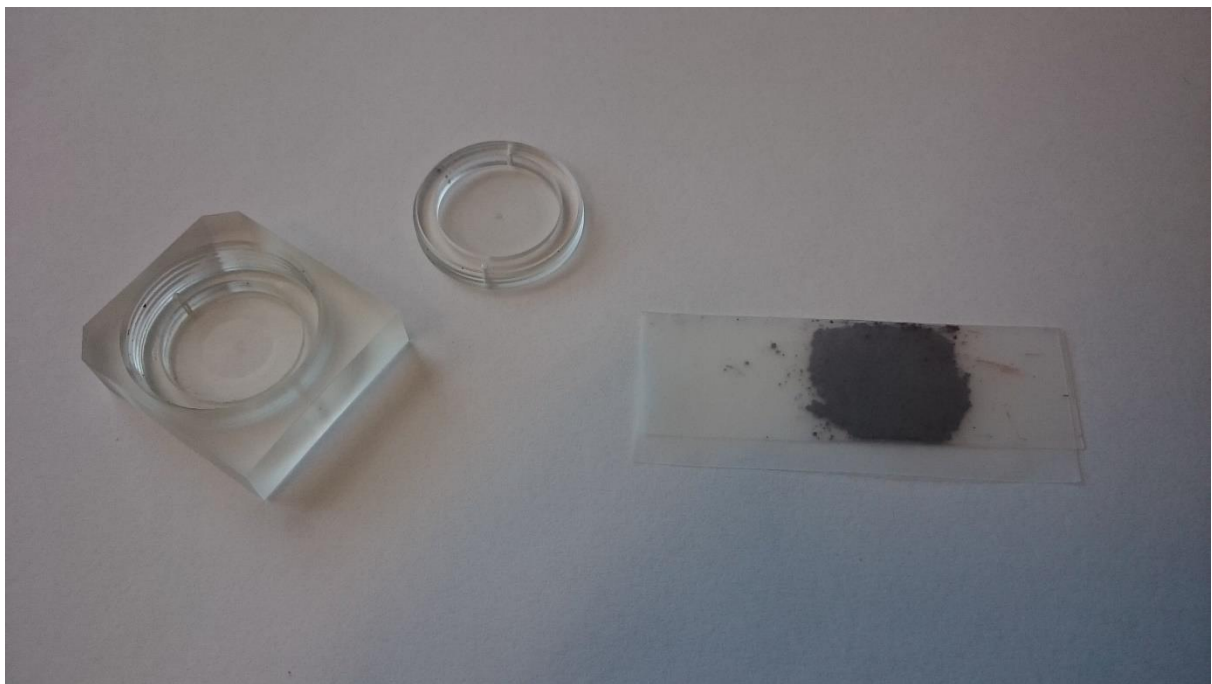
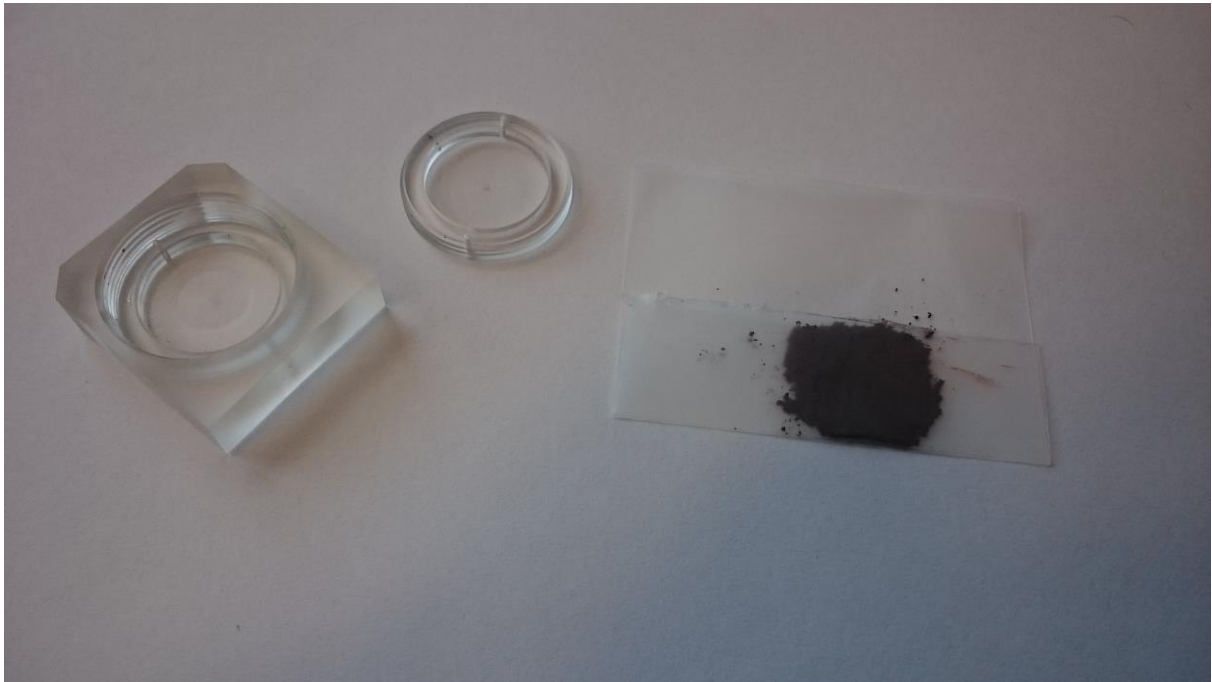
Then you can simply put your sample in the middle of PARAFILM foil.



Now you can spread the sample to the area approx 10 x 10 mm.



Fold the PARAFILM foil.



Once you have wrapped your sample into a PARAFILM foil, you can put it inside of sample container – and then into the sample chamber. Now, you can start measurement.

